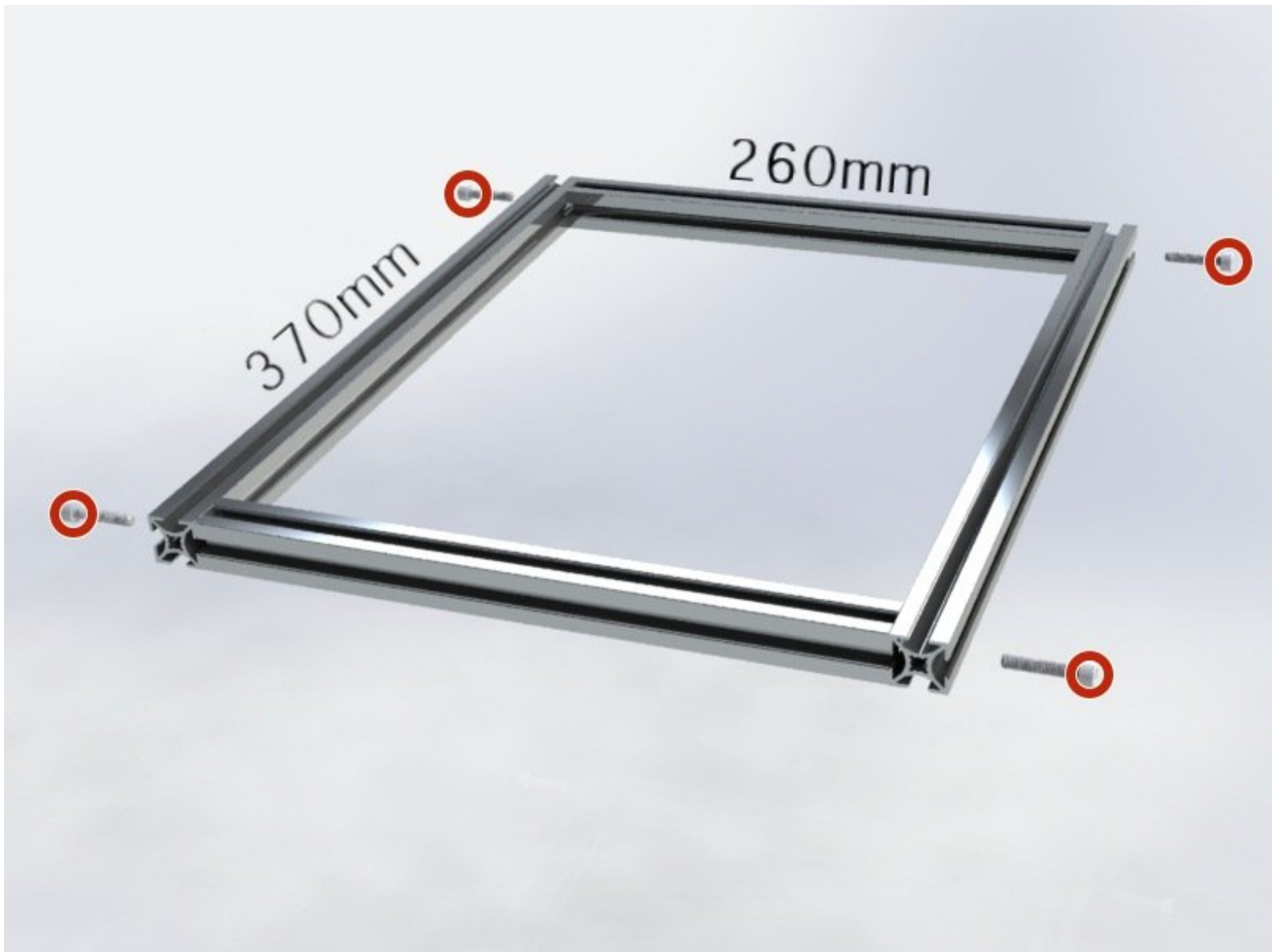




01 | XY Frame Assembly

Sigma3D Dual-X Carriage BUILD GUIDE

Written By: Ziya Yıldız

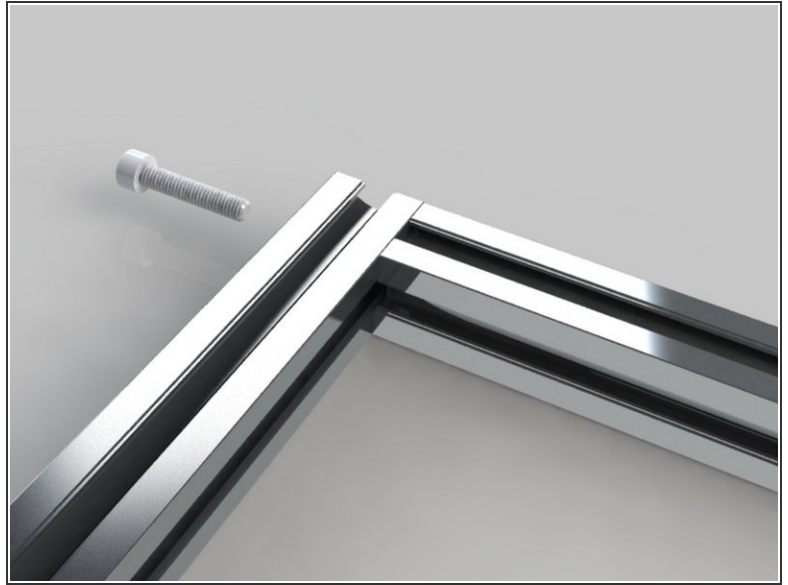
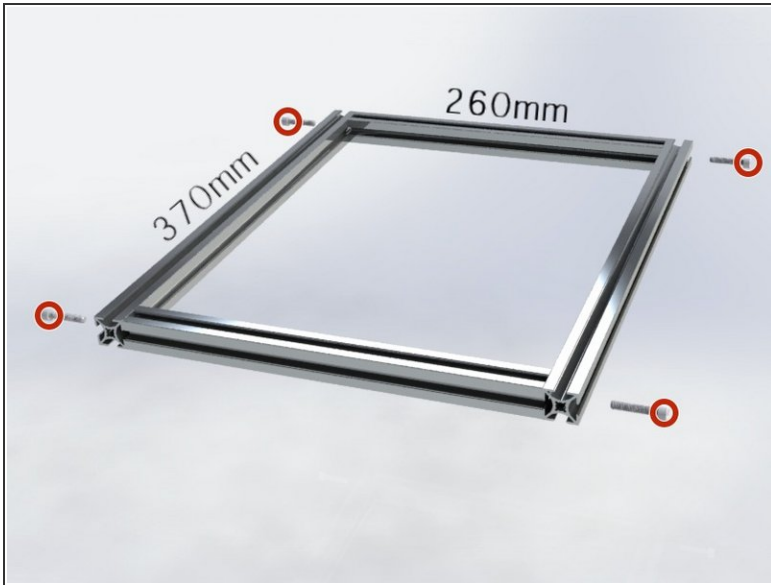




PARTS:

- [New Item](#) (1)

Step 1 — 01 | XY Frame Assembly



- M6 x 20 screw for each corner. Insert T Nuts before M5 screws and do not tighten them completely. They are there just to keep the frame in shape.

Done!